



PDM WORKBENCH CATIA V5 ARAS INNOVATOR INTEGRATION

Aras Innovator Migration Project @ F.X. MEILLER

AGENDA



1. **F.X. MEILLER**
2. **THE MIGRATION PROJECT**
3. **TWO YEARS LATER ...**

F.X. MEILLER

INNOVATION BORN FROM TRADITION FOR MORE THAN 160 YEARS



- Founded 1850 in Munich, Germany
- Locations:
 - Munich (Germany)
 - Austria
 - Turkey
 - Poland
 - Czech Republic
- 1.500 Employees
- Products:
 - Dumpers
 - Elevator Doors
- Markets and customers:
 - Automotive
 - Construction industry



CATIA PDM WORKBENCH FOR ARAS INNOVATOR

F.X. MEILLER ARAS INNOVATOR MIGRATION PROJECT



F.X. MEILLER BUSINESS CASE

VPM to Aras Innovator migration project:

- Development of specific customer requirements
- Improved usability and performance
- Reduced maintenance costs for the PDM system
- Phase out of legacy UNIX/VPM server platforms
- Initially 60 Users



SPECIFIC REQUIREMENTS

- Enhanced query UI capabilities
- Promote and revise
- Customer specific:
 - Advanced search capabilities
 - Duplication of Parts and Drawings

APPLICATIONS

- Aras Innovator 9.3 replacing ENOVIA VPM
- CATIA V5 R19

F.X. MEILLER MIGRATION PROJECT

FACTS & FIGURES



ENOVIA VPM
Data Migration
Package

CAD & Metadata

CAD Link Management

Data Quality

CATIA V4 => CATIA V5

Migration

Content

~ 2,5 Mio Records

~ 160.000 Structures

~ 1 TB of CAD Data

CAD Data migration (CATIA V4 => V5)

60 Users @ 3 different locations

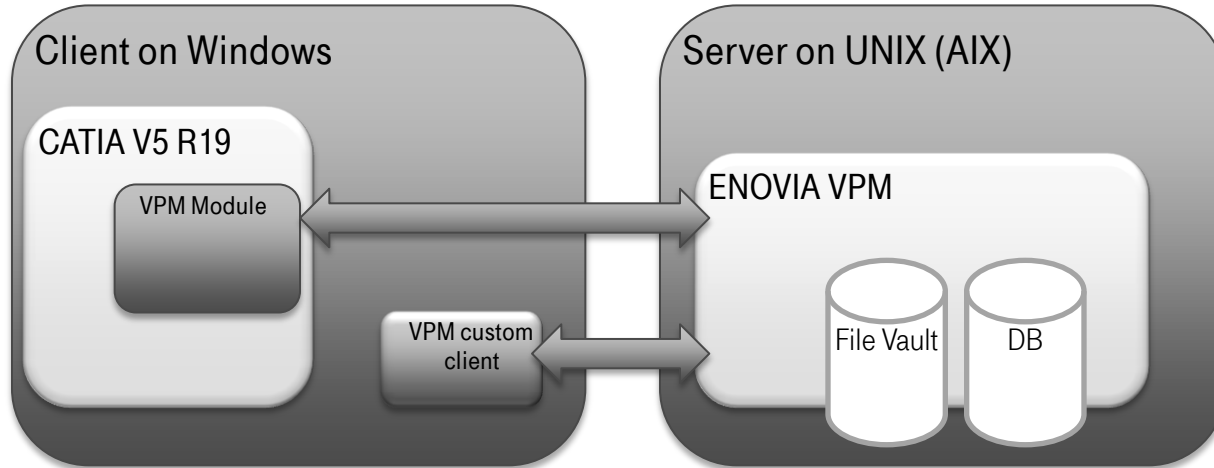
Less than 1/2 year project effort

F.X. MEILLER MIGRATION PROJECT

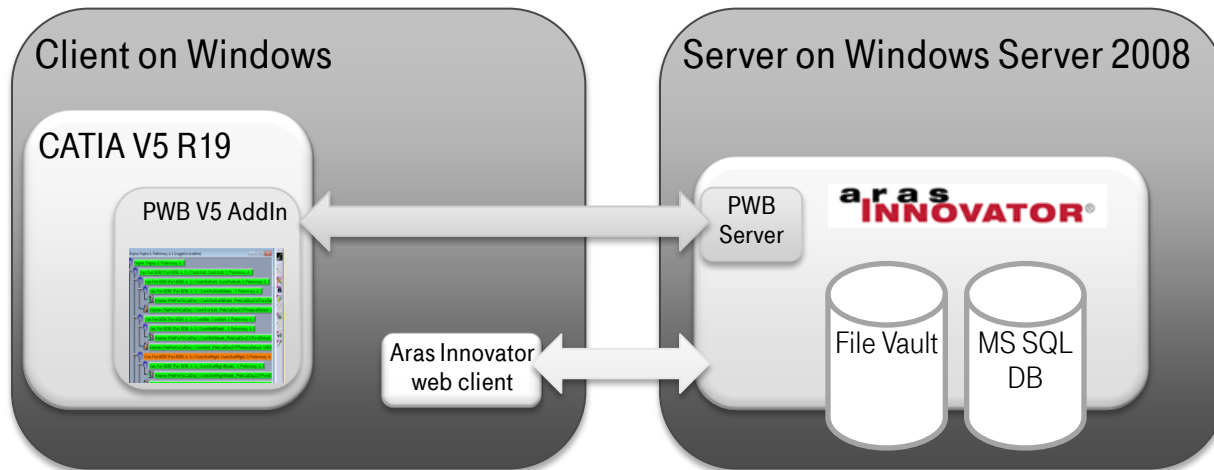
ARCHITECTURE CHANGE



Original
Infrastructure

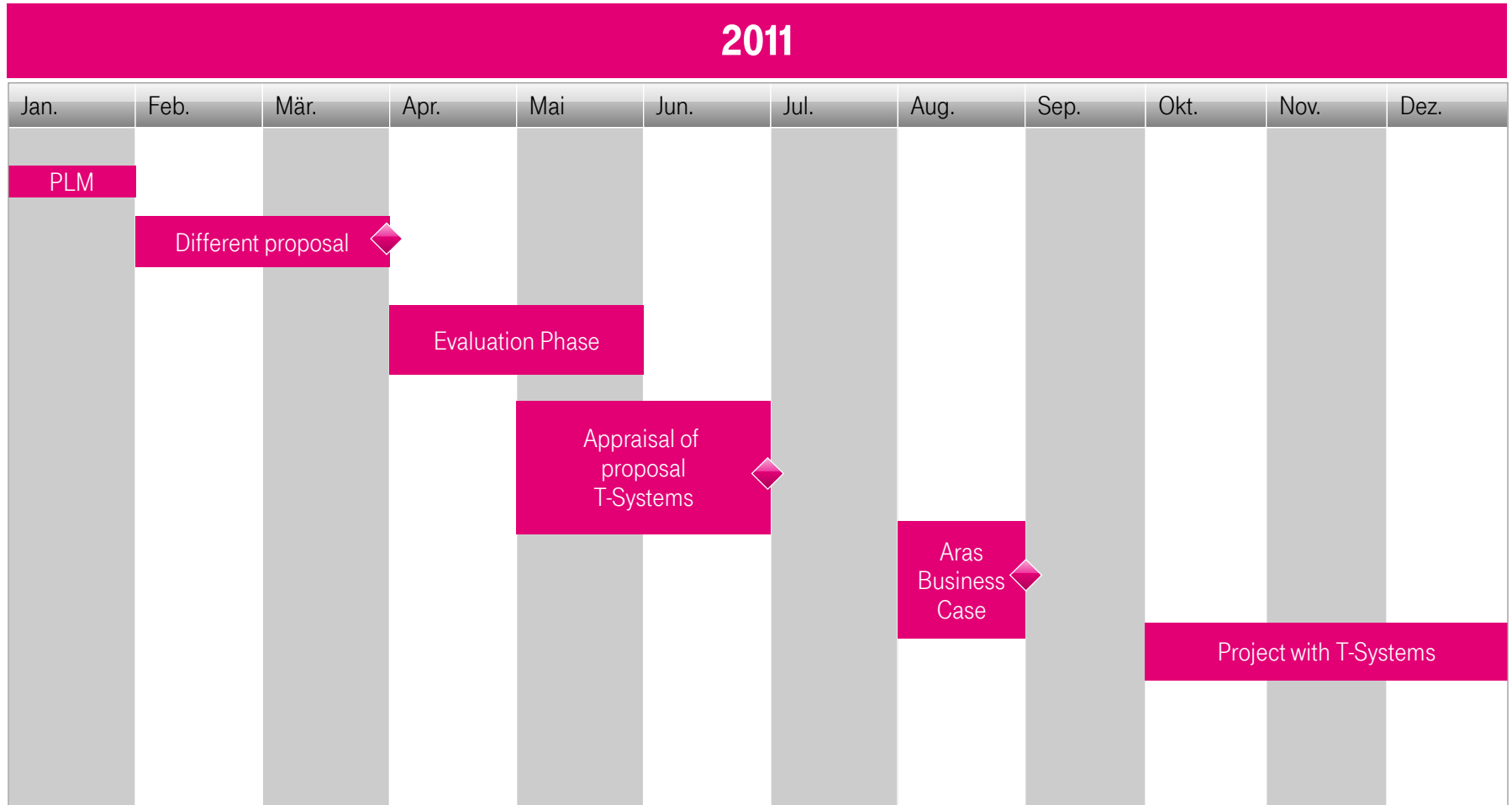


Target
Infrastructure



F.X. MEILLER MIGRATION PROJECT

PROJECT SCHEDULE



F.X. MEILLER MIGRATION PROJECT

PROJECT MODEL



STEP 0: BASICS

Meiller:

- Definition Methodology for different domains
- Data preparation:
 - Check data, drawing link
 - Convert V4 → V5
 - Migrate Standard parts
- Definition Backend processes

T-Systems:

- System configuration:
 - Hard- and Software Infrastructure
 - Access rights & roles
- Data model
- Data conversion

STEP 1: ENGINEERING

Meiller:

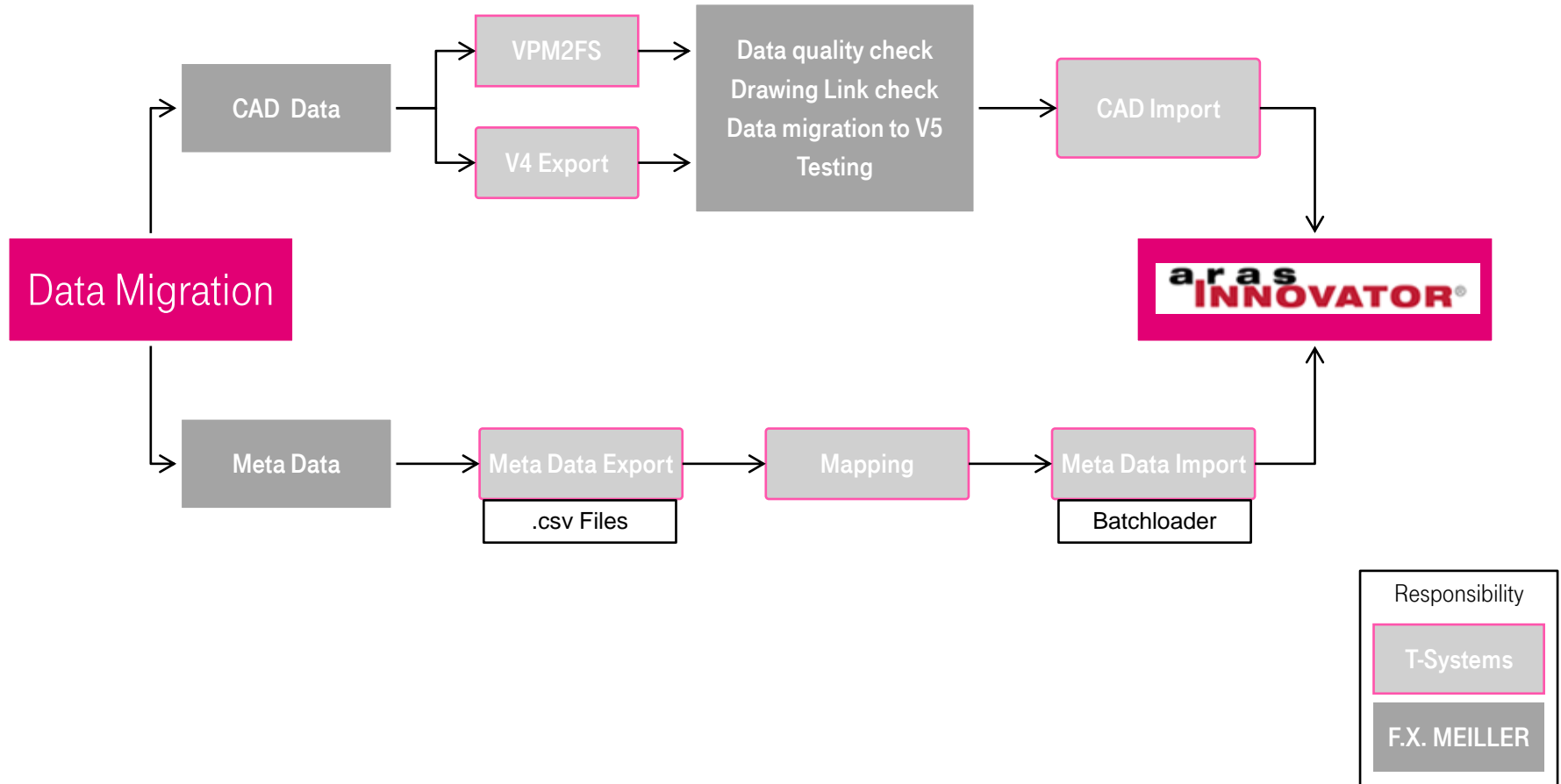
- Tests: System, Backend processes
- Support
 - Methodology
 - Training

T-Systems:

- CAD Integration
- Parts & BOM Management
- Migration of Meta and CAD data → see next slide!
- Backend processes
- Rollout /Support
- Software and Documentation

F.X. MEILLER MIGRATION PROJECT

MIGRATION WORKFLOW



F.X. MEILLER MIGRATION PROJECT

SUMMARY



- Project duration: 6 months
- Set up of new PDM infrastructure at the customers site.
- Successful migration of existing CAD data structures to Aras Innovator.
- MEILLER is productive with both divisions in the new infrastructure since 08/2012.
- Infrastructure effort much smaller compared to old setup
- ROI: after three months the savings in infrastructure compensated the project efforts.
- 30%-50% performance improvement compared to the VPM environment.
- User experience improved

F.X. MEILLER ARAS INNOVATOR USAGE

TWO YEARS LATER

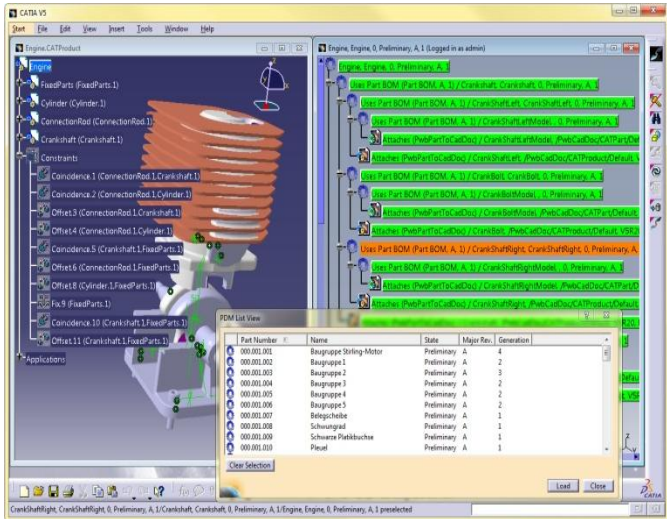


RECENTLY ADDED FEATURES

- Single-sign-on with the CAD Connector-client
- Configuration of CAD Connector-client is administrated for different user groups
- External supplier integrated into rights & roles
 - Granular visibility and accessibility of items is supported

CATIA PDM WORKBENCH FOR ARAS INNOVATOR

THE IMMERSIVE PDM INTEGRATION FOR CATIA V5



The PDM Workbench is a comprehensive PDM Rich Client seamlessly integrated in CATIA V5. It enables access to and full control of CATIA data via PDM.

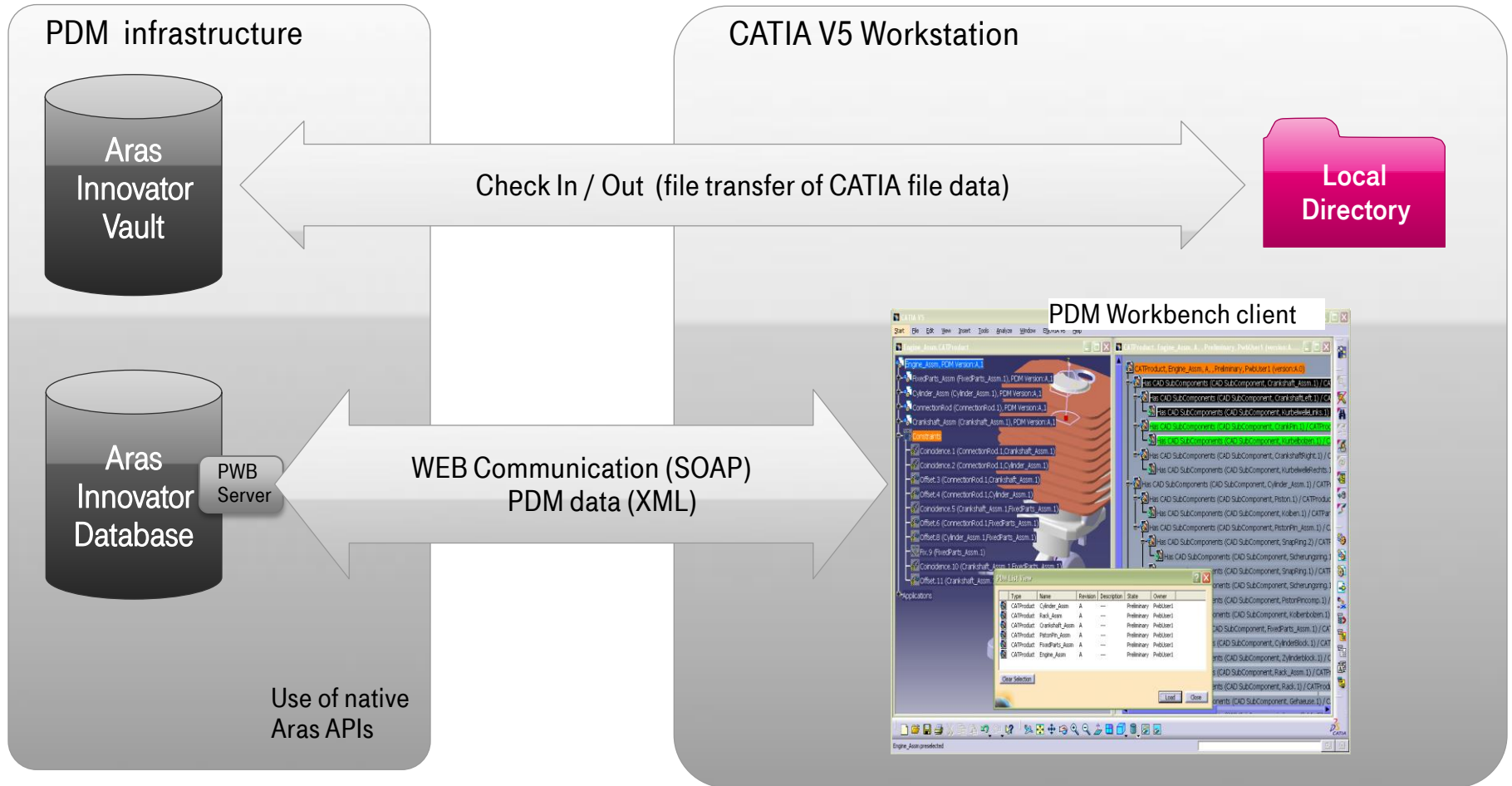
PDM Workbench integrates CATIA V5 into Aras Innovator

- Connector: cares about data and files
- Integration: cares about data, files and processes

- CAD specific PDM functionality in CATIA V5 enabling design engineers to stay in CATIA only.
- CATIA V5 look and feel by using standard CAA framework.
- Allows the use of a customized data model.
- PDM Workbench features can be tailored by simply editing schema files.
- Tree navigation and list view
- Display and modification of PDM properties via dialogs
- Identification of nodes, display of access rights
- Supports multi byte character environments

CATIA PDM WORKBENCH FOR ARAS INNOVATOR

ARCHITECTURE OVERVIEW



T-SYSTEMS PLM SOLUTIONS

PARTNERSHIPS

Partnerships with Dassault Systèmes and Aras Corp.

Aras Business Partner and Aras Solution Partner

- T-Systems partners with Aras in many projects and drives the CAD Integration development.
- Aras is reseller of T-Systems' CAD Integration solutions for Aras Innovator.

CAD and PLM / PDM System Integration is the core business of the T-Systems PLM group

- Partnerships with all major PLM and CAD players.

Development and Service Partnership with Dassault Systèmes

- CAA Gold Partner for development, Consulting and Value Added Reseller for CATIA V5 and Community Partner for ENOVIA/CATIA V6 Integration to Teamcenter and Windchill.
- V6 CAA Product Partner for Teamcenter and SAP Integration.



Contact



www.meiller.com

servicenet.t-systems.com/plm



Wayne Bartle
Automotive Sector Manager - North America

Address **T-Systems North America Inc.**
755 West Big Beaver Rd, 17th Fl, Ste 1700
Troy, MI, US
Contacts Cell +1 248 620 1558
E-mail wayne.bartle@t-systems.com



Patrick Aretz
Project Manager PLM

Address **T-Systems International GmbH**
Fasanenweg 5
70771 Leinfelden-Echterdingen, Germany
Contacts Phone +49 711 999 8377
Mobile +49 151 11716922
E-mail patrick.aretz@t-systems.com

THANK YOU!