

PDM Workbench

The CATIA V5 – Embedded PDM Client

PDM Workbench is a CATIA V5 integration which comes with a PDM client integrated in the CATIA V5 GUI. It combines the control of PDM with the CAD superiority of CATIA V5 in a single user interface.

CATIA V5 Integration

PDM Workbench, designed as a CATIA V5 Add-In, is dedicated to displaying and manipulating PDM data. The solution relies on a Web-Services Infrastructure and works with SAP.

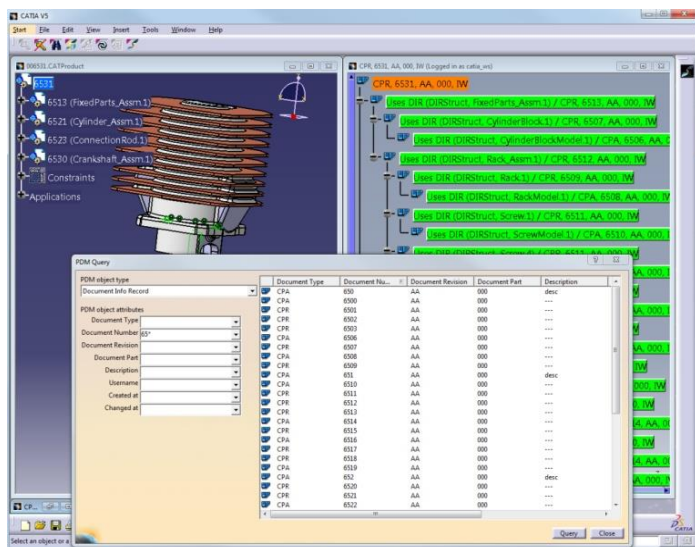
It enables the designer to take full advantage of PDM capabilities supporting collaborative product development, all within the CATIA V5 environment the designer is familiar with.

Key Features

- Supports PDM capabilities like query, BOM navigation, check out, check in, update, create of PDM and CAD data
- PDM GUI overcomes typical PDM Client GUI restrictions
- Can be configured to any customer data model
- Populates empty BOM-structures with CATIA data on-the-fly
- Simple and cost-efficient tailoring to customer needs
- Allows the synchronization of CATIA product structures to PDM

Technical Highlights

- Communication between the CATIA session and the PDM session based on Web Services
- SOAP (Simple Object Access Protocol) based communication (firewall-friendly)
- Fully customizable (PDM data model, dialogs, icons)
- Additional PDM functionality can be added by configuration



PDM Workbench in CATIA V5

PDM Workbench Support Table

Application	Release
SAP	ERP 6.0 (ECC 6.0), other releases on request
CATIA V5	V5-6R2016, V5-6R2017, V5-6R2018, V5-6R2019, other releases on request

Platform	OS Level
Microsoft Windows	Windows 7 (64 Bit), Windows 10 (64 Bit)

Benefits

- CAD specific PDM functionality in CATIA V5 enabling design engineers to stay within CATIA only
- CATIA V5 look and feel by using standard CATIA V5 user interface
- PDM Workbench GUI independent of PDM client GUI
- Access PDM system from every client machine where PDM Workbench on CATIA V5 is running

Contact

T-Systems International GmbH
 Phone: +49 40 30600 5544
 E-mail: plm.solutions@t-systems.com
 Internet: <http://plm.t-systems-service.com/en/pdm-workbench>